

LABOR MARKET REVIEW

Economic Growth Region 6

Statistical Data Report for February 2018, Released April 2018

State Employment and Unemployment

Unemployment rates were lower in February in 7 states and stable in 43 states and the District of Columbia, the U.S. Bureau of Labor Statistics reported. Fifteen states had jobless rate decreases from a year earlier and 35 states and the District had little or no change. The national unemployment rate was unchanged from January at 4.1 percent but was 0.6 percentage point lower than in February 2017.

Nonfarm payroll employment increased in 11 states in February 2018 and was essentially unchanged in 39 states and the District of Columbia. Over the year, 24 states added nonfarm payroll jobs and 26 states and the District were essentially unchanged.

Hawaii had the lowest unemployment rate in February, 2.1 percent. The rates in California (4.3 percent), Maine (2.9 percent), Mississippi (4.5 percent), and Wisconsin (2.9 percent) set new series lows. (All state series begin in 1976.) Alaska had the highest jobless rate, 7.3 percent. In total, 18 states had unemployment rates lower than the U.S. figure of 4.1 percent, 9 states and the District of Columbia had higher rates, and 23 states had rates that were not appreciably different from that of the nation.



Economic Growth Region (EGR) 6

Blackford, Delaware, Fayette, Henry, Jay, Randolph, Rush, Union, and Wayne Counties

Unemployment Rates by State (seasonally adjusted): February 2018

U.S. - 4.1%

Illinois - 4.7%

Indiana - 3.2%

Kentucky - 4.1%

Michigan - 4.8%

Ohio - 4.5%

Source: U.S. Department of Labor, Bureau of Labor Statistics

Unemployment Rank by County (of 92 counties): February 2018

#11 - Fayette (4.9%)

#14 - Randolph (4.7%)

#15 - Blackford (4.6%)

#22 - Delaware (4.3%)

#33 - Henry (4%)

#38 - Jay (3.9%)

#46 - Wayne (3.8%)

#60 - Union (3.5%)

#72 - Rush (3.2%)

Source: Indiana Department of Workforce Development, Research and Development, Local Area Unemployment Statistics

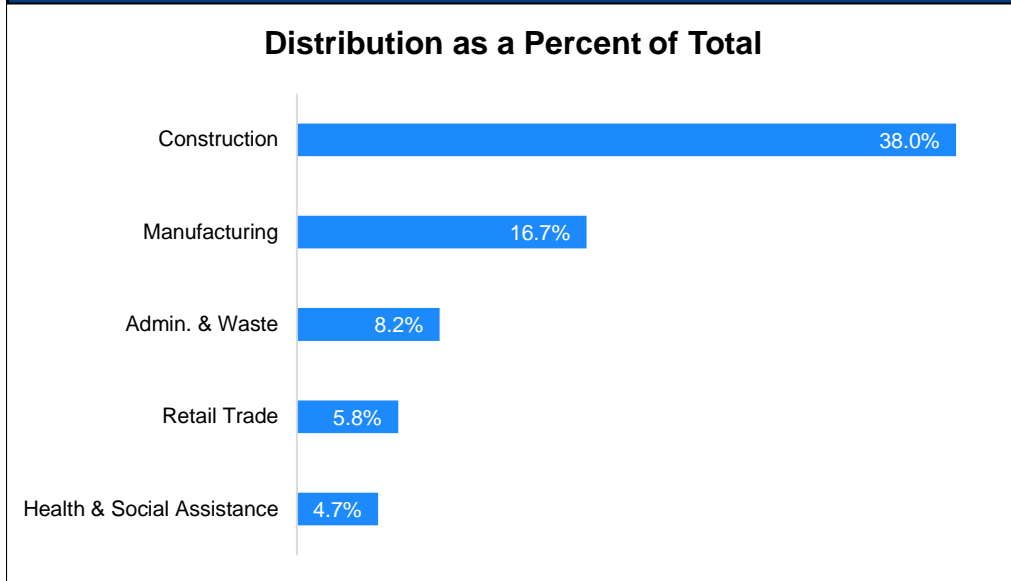
February 2018 Labor Force Estimates (not seasonally adjusted)						
Area	Labor Force	Employed	Unemployed	Feb-18	Jan-18	Feb-17
U.S.	161,494,000	154,403,000	7,091,000	4.4%	4.5%	4.9%
IN	3,324,570	3,201,419	123,151	3.7%	3.6%	4.3%
EGR 6	155,994	149,561	6,433	4.1%	3.9%	4.8%
Muncie MSA	55,361	52,981	2,380	4.3%	4.1%	4.9%
Blackford Co.	5,349	5,105	244	4.6%	4.1%	5.2%
Delaware Co.	55,361	52,981	2,380	4.3%	4.1%	4.9%
Fayette Co.	8,974	8,537	437	4.9%	4.8%	5.9%
Henry Co.	22,089	21,211	878	4.0%	3.7%	4.5%
Jay Co.	9,485	9,117	368	3.9%	3.6%	4.3%
Randolph Co.	11,464	10,926	538	4.7%	4.4%	5.5%
Rush Co.	8,802	8,518	284	3.2%	3.2%	3.9%
Union Co.	3,599	3,474	125	3.5%	3.3%	4.0%
Wayne Co.	30,871	29,692	1,179	3.8%	3.7%	4.6%
Connersville	4,547	4,320	227	5.0%	5.1%	6.8%
Muncie	31,933	30,491	1,442	4.5%	4.2%	5.1%
New Castle	7,608	7,309	299	3.9%	3.6%	4.4%
Richmond	14,999	14,427	572	3.8%	3.9%	4.6%

Source: Indiana Department of Workforce Development, Research & Analysis, Local Area Unemployment Statistics | Unemployment Statistics Released: 03/18 | Notes: The data displayed are presented as estimates only. The most recent month's data are always preliminary and are revised when the next month's data are released.

Consumer Price Index (CPI-U Change), Unadjusted Percent Change to February 2018 from				
CPI Item	Feb-17	Jan-18	Feb-17	Jan-18
	U.S. City		Midwest Region*	
All Items	2.2%	0.5%	1.7%	0.2%
Food & Beverages	1.4%	0.0%	1.3%	0.1%
Housing	2.8%	0.3%	2.3%	0.4%
Apparel	0.4%	3.5%	2.5%	2.7%
Transportation	4.1%	1.0%	3.1%	-0.1%
Medical Care	1.8%	0.4%	0.3%	0.2%
Recreation	0.6%	0.4%	1.3%	0.1%
Education & Communication	-1.8%	-0.2%	-1.6%	-0.1%
Other Goods & Services	2.4%	0.1%	0.4%	-1.1%

*Midwest region = Midwest Urban Average. Midwest Region includes Illinois, Indiana, Iowa, Kansas, Michigan, Minnesota, Missouri, Nebraska, North Dakota, Ohio, South Dakota and Wisconsin | Source: U.S. Bureau of Labor Statistics

Percentage of Unemployment Claims for Top 5 Region 6 Industries February 2018



Source: Indiana Department of Workforce Development, Research and Analysis

WARN Notices

WARN Notices for Region 6 for February 2018				
Company	City	County	# of workers affected	Notice Date
Walmart	Rushville	Rush	95	2/1/2018

Source: Indiana Department of Workforce Development, WARN Notices | For information on WARN Act requirements, you may go to the U.S. Department of Labor Employment Training Administration Fact Sheet:

<https://www.dolela.gov/programs/factsh/warn.htm>

Unemployment Claims: February 2018

Region 6

Initial Claims

02/03/18 - 151(D)

02/10/18 - 86(D)

02/17/18 - 80(D)

02/24/18 - 76(D)

Continued Claims

02/03/18 - 1,240

02/10/18 - 1,216

02/17/18 - 1,211

02/24/18 - 1,172

Total Claims

02/03/18 - 1,391

02/10/18 - 1,302

02/17/18 - 1,291

02/24/18 - 1,248

State of Indiana

Initial Claims

02/03/18 - 2,739

02/10/18 - 2,687

02/17/18 - 2,500

02/24/18 - 2,074

Continued Claims

02/03/18 - 22,554

02/10/18 - 22,820

02/17/18 - 22,599

02/24/18 - 22,223

Total Claims

02/03/18 - 25,293

02/10/18 - 25,507

02/17/18 - 25,099

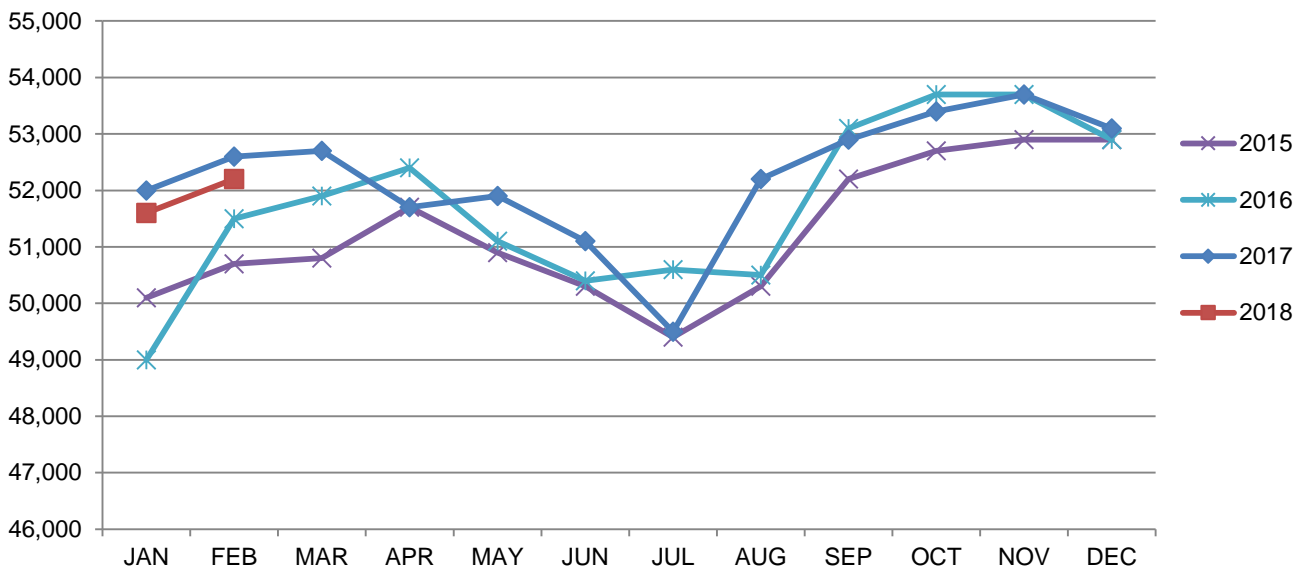
02/24/18 - 24,297

(D) indicates item is affected by non-disclosure issues relating to industry or ownership status | Source: Indiana Department of Workforce Development, Research and Development

Muncie MSA							
Wage and Salaried Employment	February 2018			# Change	% Change	# Change	% Change
Industry	Feb-18	Jan-18	Feb-17	Jan-18 to Feb-18		Feb-17 to Feb-18	
Total Nonfarm	52,200	51,600	52,600	600	1.2%	-400	-0.8%
Total Private	38,000	37,800	38,800	200	0.5%	-800	-2.1%
Goods Producing	5,600	5,600	5,700	0	0.0%	-100	-1.8%
Service-Providing	46,600	46,000	46,900	600	1.3%	-300	-0.6%
Private Service Providing	32,400	32,200	33,100	200	0.6%	-700	-2.1%
Mining, Logging and Construction	1,300	1,300	1,400	0	0.0%	-100	-7.1%
Manufacturing	4,300	4,300	4,300	0	0.0%	0	0.0%
Trade, Transportation, and Utilities	8,500	8,700	8,900	-200	-2.3%	-400	-4.5%
Wholesale Trade	1,000	1,100	1,000	-100	-9.1%	0	0.0%
Retail Trade	6,100	6,200	6,500	-100	-1.6%	-400	-6.2%
Transportation, Warehousing, and Utilities	1,400	1,400	1,400	0	0.0%	0	0.0%
Information	300	300	300	0	0.0%	0	0.0%
Financial Activities	2,400	2,400	2,400	0	0.0%	0	0.0%
Education and Health Services	9,000	9,000	8,900	0	0.0%	100	1.1%
Leisure and Hospitality	4,900	4,900	5,200	0	0.0%	-300	-5.8%
Other Services	1,800	1,800	1,800	0	0.0%	0	0.0%
Government	14,200	13,800	13,800	400	2.9%	400	2.9%
State Government	10,100	9,700	9,800	400	4.1%	300	3.1%
State Government Educational Services	9,900	9,500	9,600	400	4.2%	300	3.1%
State Government Excluding Education	200	200	200	0	0.0%	0	0.0%
Local Government	3,800	3,800	3,700	0	0.0%	100	2.7%
Local Government Educational Services	2,200	2,200	2,200	0	0.0%	0	0.0%
Local Government excluding Educational Services	1,600	1,600	1,500	0	0.0%	100	6.7%

Source: Indiana Dept of Workforce Development, Research and Analysis, Current Employment Statistics

Muncie MSA Employment Trends



Source: Indiana Department of Workforce Development, Research & Analysis, Current Employment Statistics | Note: Historical data for the most recent 4 years (both seasonally adjusted and not seasonally adjusted) are revised near the beginning of each calendar year, prior to the release of January estimates for statewide data.

Frequently Listed Jobs	
Top 20 job listings in Region 6 in the past month	
Rank	Occupations
1	Registered Nurses
2	Licensed Practical and Licensed Vocational Nurses
3	Laborers and Freight, Stock, and Material Movers, Hand
4	Maintenance and Repair Workers, General
5	Production Workers, All Other
6	Customer Service Representatives
7	Heavy and Tractor-Trailer Truck Drivers
8	Nursing Assistants
9	Assemblers and Fabricators, All Other
10	Welders, Cutters, and Welder Fitters
11	Child, Family, and School Social Workers
12	Education Administrators, Elementary and Secondary School
13	Helpers--Production Workers
14	Public Relations Specialists
15	Construction and Building Inspectors
16	Educational, Guidance, School, and Vocational Counselors
17	Health Specialties Teachers, Postsecondary
18	Chief Executives
19	City and Regional Planning Aides
20	First-Line Supervisors of Food Preparation and Serving Workers

Source: Indiana Workforce Development, Indiana Career Connect

Applicant Pool	
Top 20 occupations desired by applicants on their resumes in the past 12 months	
Occupations	# of applicants
Production Workers, All Other	1,821
Assemblers and Fabricators, All Other	1,259
Helpers--Production Workers	734
Laborers and Freight, Stock, and Material Movers, Hand	533
Customer Service Representatives	471
Cashiers	462
Team Assemblers	379
Stock Clerks and Order Fillers	315
Office Clerks, General	290
Nursing Assistants	278
Extraction Workers, All Other	261
Construction Laborers	257
Managers, All Other	252
Office and Administrative Support Workers, All Other	240
Industrial Truck and Tractor Operators	237
Combined Food Preparation and Serving Workers, Including Fast Food	220
Electrical and Electronic Equipment Assemblers	217
First-Line Supervisors of Production and Operating Workers	217
Welders, Cutters, Solderers, and Brazers	212
Inspectors, Testers, Sorters, Samplers, and Weighers	202

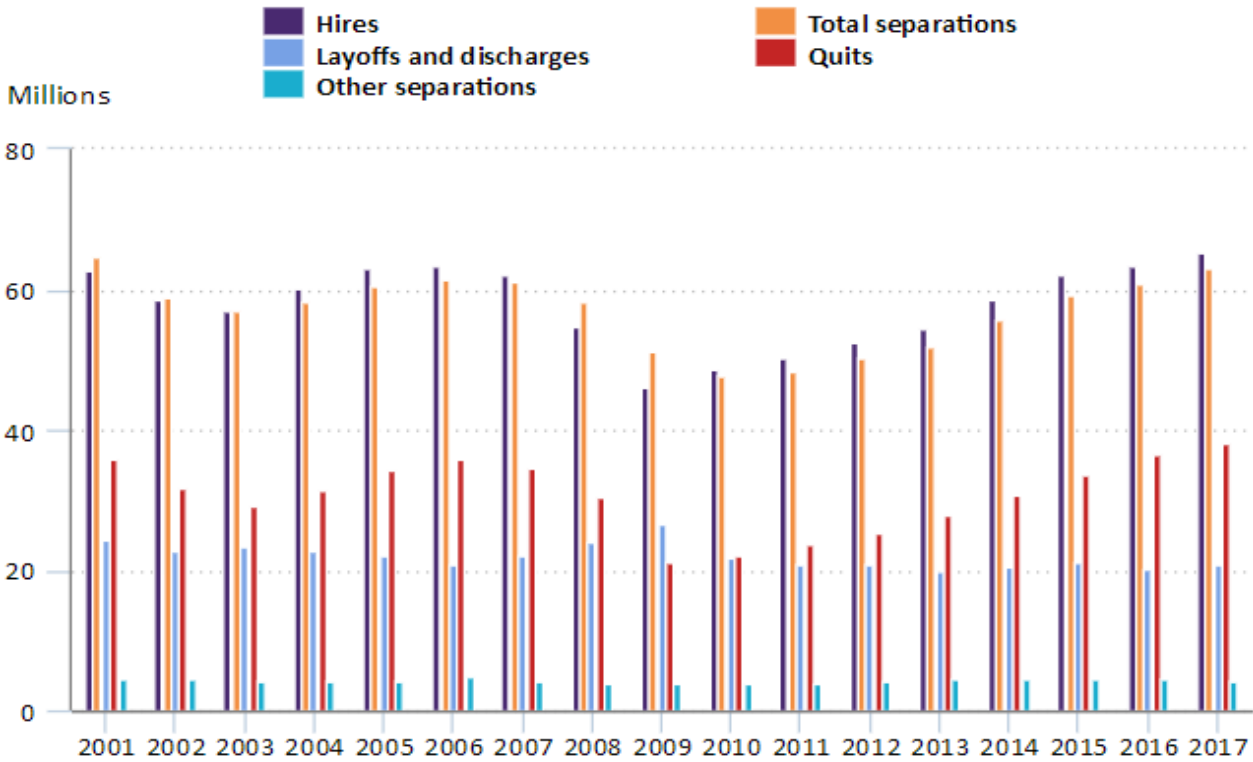
Source: Indiana Workforce Development, Indiana Career Connect

Hires and Quits Rose in 2017

(Excerpted from the Bureau of Labor Statistics, U.S. Department of Labor, *The Economics Daily*)

There were 65.3 million hires in 2017, an increase from 63.2 million in 2016. Total separations (the sum of quits, layoffs and discharges, and other separations) rose in 2017 to 63.0 million. Quits rose for the eighth consecutive year, reaching 38.2 million in 2017. Quits comprised 61 percent of total separations in 2017.

Annual hires and separations, 2001–17



Layoffs and discharges edged up in 2017 to 20.7 million and comprised 33 percent of total separations. Other separations declined in 2017 to 4.2 million and comprised 7 percent of total separations.

These data are from the Job Openings and Labor Turnover Survey. To learn more, see "Job Openings and Labor Turnover — January 2018." Quits are generally voluntary separations initiated by the employee. Layoffs and discharges are involuntary separations initiated by employers. Other separations include retirements, transfers to other locations, deaths, and separations because of disability. We also have more charts featuring data on job openings, hires, and separations.

County Unemployment Rates February 2018



INDIANA
DEPARTMENT OF
WORKFORCE
DEVELOPMENT

Questions?

Please contact the DWD
Research and Analysis
Regional Labor Analyst
listed below:

Kent Sellers

Regional Labor Analyst
Research and Analysis

[Indiana Department of
Workforce Development](http://www.in.gov/dwd)

200 E. Main St., SE 910
Fort Wayne, IN 46802

260-469-4313

WSellers@dwd.in.gov

