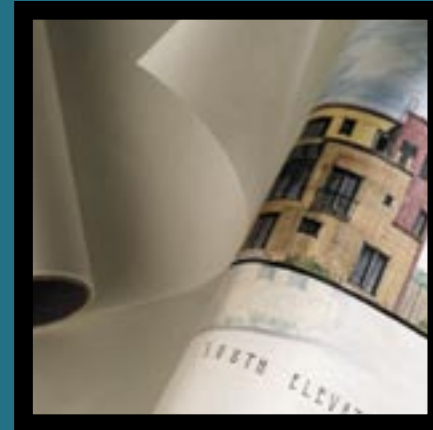


MAJOR EMPLOYERS

Cardinal Health System, Inc.	3,547
Ball State University	3,289
Muncie Comm. Schools	1,800
Borg Warner Automotive	1,300
Marsh Foods	940
Delaware County Govt.	556
Wal-Mart	539
City of Muncie	509
Meijer, Inc.	507
Youth Opportunity Center, Inc.	420
First Merchants Bank, N.A.	410
Duffy Tool & Stamping	400
Delaware Community School Corporation	350
Manual Transmissions of Muncie, LLC	350
Ontario Systems, LLC	345




**MUNCIE-DELAWARE COUNTY, INDIANA
 ECONOMIC DEVELOPMENT ALLIANCE**
 CONNECTING FORCES



air
 park
 INDUSTRIAL PARK



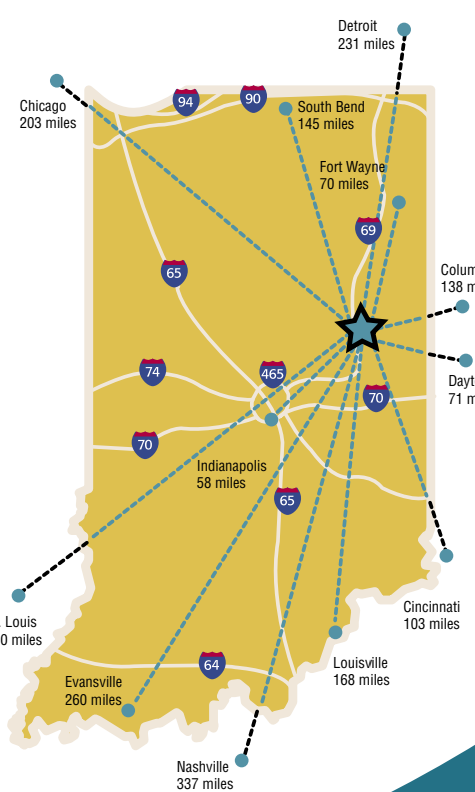

**MUNCIE-DELAWARE COUNTY, INDIANA
 ECONOMIC DEVELOPMENT ALLIANCE**
 CONNECTING FORCES

Email: tmurphy@muncie.com
www.muncie.com
www.muncietechtoday.com

401 South High Street
 P.O. Box 842
 Muncie, Indiana 47308

Phone: 765.288.6681
 Toll free: 800.336.1373
 Fax: 765.751.9151





air park

A 150-acre park with infrastructure in place

- On I-69 Technology Corridor
- Excellent labor pool
- Supportive community

PARK DIMENSIONS

Overall Size: The Air Park Industrial Park has approximately 150 acres of land. There are approximately 40 acres of land still available.

WATER & SANITATION

Water: The Air Park is served by a 16" water line. Source: Indiana American Water

Sanitary Service: The Air Park is served by a 15" sewer line. 36" storm drainage lines are located throughout the park. Source: Muncie Sanitary District

SOLID WASTE DISPOSAL

Jay County Landfill - 30 miles • Randolph Farms - 27 miles

AVAILABLE LOT ACREAGE

A	14.26 acres	14	2.7 acres	24	2.35 acres	29	2.55 acres
13	3.65 acres	23	2.43 acres	27	2.56 acres	31	9.13 acres

COMMUNICATION

Telecommunications: Services provided by SBC, ATT, MCI. Fiber Optics are in place.

Internet: Numerous local internet providers are based in Delaware County. Construction of a country-wide wireless system was planned to begin in the fourth quarter of 2004.

ENERGY

Natural Gas: Vectren serves the park with a 10" high pressure line. Source: Vectren

Electrical: 12.4kV distribution line. Dual feed available. Source: AEP - Indiana American Power

TRANSPORTATION

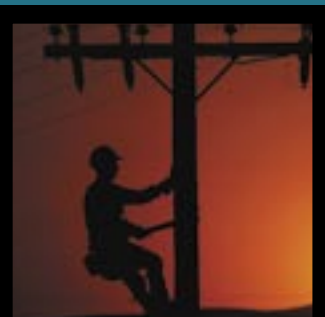
Four-lane access to Interstate: I-69 via State Road 67 (16 miles) and Interstate 70 via State Road 3 (28 miles).

Trucking: Delaware County is served by more than thirty trucking firms.

Air: Indianapolis International Airport (68 miles), Fort Wayne International Airport (65 miles) and Dayton Ohio International Airport (81 miles) provide commercial and air cargo services. Muncie's Johnson Field is a general aviation airport and can accommodate corporate aircraft.

SPECIAL LEGISLATION

Park One is located on the I-69 Technology Corridor. Delaware County is one of only six counties in the State of Indiana that offers tax abatement on logistical and information technology equipment.



Air Park Industrial Park is strategically located adjacent to the Muncie Airport (Johnson Field) with four-lane access to both Interstate 69 and Interstate 70.

Located within a day's drive of 60% of the U.S. population and retail trade market, Air Park provides fully serviced business sites for small, medium and large-size businesses.

Call us at 1.800.336.1373



ABOUT OUR COMMUNITY

Muncie-Delaware County, Indiana is located 58 miles northeast of Indianapolis in the east central portion of the state. Muncie, the county seat, comprises nearly sixty percent of Delaware County's population. Our community is grounded with good paying manufacturing jobs, a top educational institution, growing information technology companies, and a regional medical center.

Muncie-Delaware County serves as a commercial, financial, and cultural center of the seven county East Central Indiana area. The community has a county labor force of approximately 60,000 people and seven county regional workforce over 210,000.

City of Muncie: 22 sq miles/ 14,214 acres
Delaware Co.: 397 sq miles/ 254,144 acres